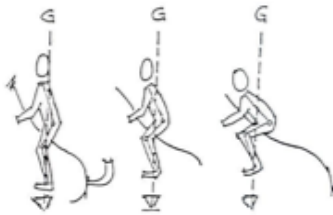




STAIRCASE UP / RIDDEN



**Levels
1 - 4**

Dimensions are the same for all levels

Description

A staircase of three or more steps to ascend. Must be negotiated at the walk.

Objective

To demonstrate the correct approach of the rider and the balance and willingness of the horse.

Features

- Natural or man-made fixed staircase
- Length: 5 to 10 m according to the degree of slope
- Front width: minimum 1 m
- Stair depth: approx 40 cm
- Stair height: 20 to 30 cm

Style Evaluation

- Regular forward motion. Horse may skip stair step(s) if the rhythm of the stride remains consistent
- Correct rider position, over the stirrups and light, looking ahead
- Horse and rider maintain balance
- Horse moving straight
- Discreet and correct rider aids

Effectiveness Faults

- Break of gait
- Running out
- Error of course corrected
- Stepping back
- Refusal
- Circling

Penalties

Zero Overall Score

- Foot outside obstacle boundaries

Points Subtracted

- -5 - Brutality
- -5 - Dangerous riding



Obstacle #:

STAIRCASE UP / RIDDEN

Judge:

	Rider #					
Effectiveness						
Correct	7					
1 Fault	4					
2 Faults	1					
3 Faults	X					
	Total E					
Style						
Very good	3					
Quite good	2					
Good	1					
Average	-					
Mediocre	-1					
Bad	-2					
	Total S					
Penalties						
Brutality	-5					
Dangerous riding	-5					
Foot outside	X					
Fall of rider/horse	Excused					
	Total P					
Score	E + S + P =					

Observations (Rider #, Comment):